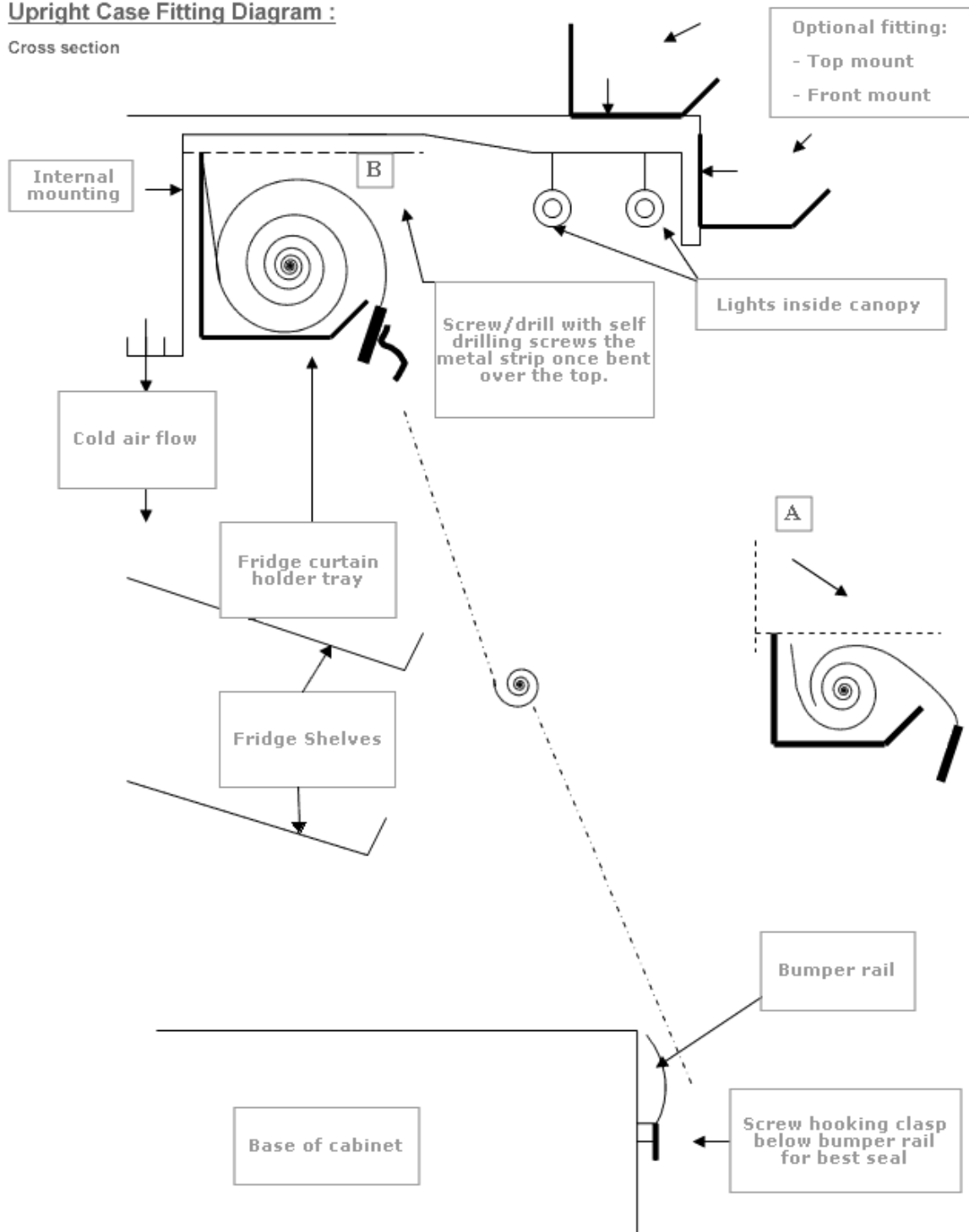


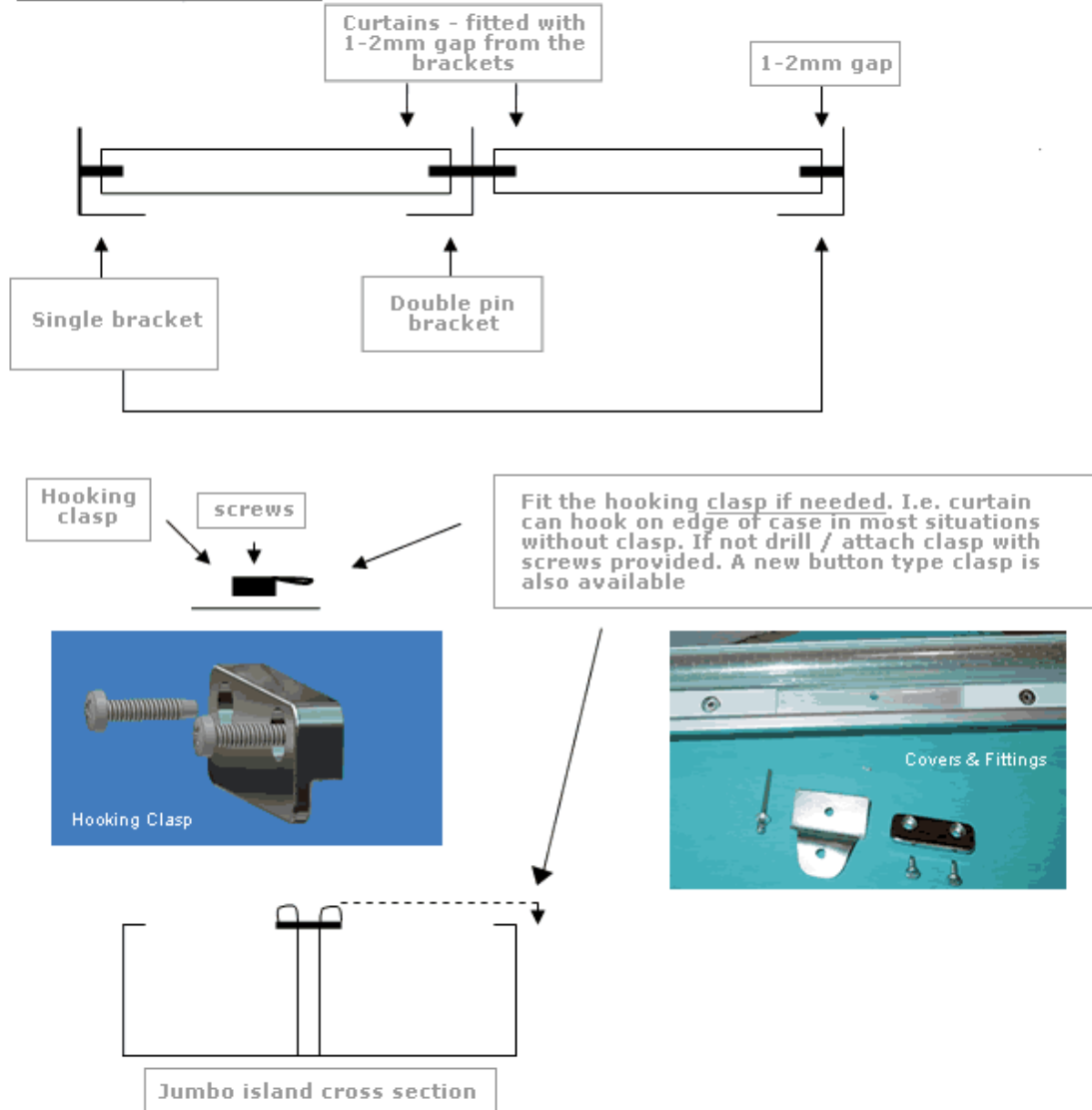
## Upright Case Fitting Diagram :

Cross section



1. Fit covers evenly with small gaps of +/- 10mm between each other and the side of the case in order to allow the curtains to roll up easily.
2. If mounting internally, swivel metal strips up and bend over the top at 90 degrees (see dotted line above at point "A" and "B").
3. The curtain must rest on the holder tray when retracted so as to prevent it from hanging down.
4. Kool Curtains 082 920 4313 / 031 563 4817.

## Roller blind type curtain



### INSTALLATION INSTRUCTIONS

#### ROLLERBLIND TYPE CURTAIN ( for lowbed cases- horizontal or Curved glass cases).

1. Place an end bracket in the required position and drill the holes/ screw in.
2. Slot the cover/aluminium pipe into the bracket and place another bracket at the other end. (leaving enough room to allow the unit to roll freely +/- 1mm)
3. The brackets with one pin (single Bracket) are for the ends ie beginning or end of a case. The double pins brackets are for curtains meeting on each side.
4. Mark the holes and drill/screw bracket in place or pop rivet.
5. Pull the curtain out over the area to be covered and mark where the hook ( chrome casting clasp) should go.
6. Drill a hole with the self-tapers provided (or use a 3.3 mm drill bit) and fix the hooking clasp to the case with screws provided.
7. Test the unit, ensuring that it rolls out easily. If not, check brackets have 90 deg. bend, or are not too close to the sides of the curtain when rolling up. Or drill wider hole in the plastic bush.

### DAILY OPERATION

When opening in the morning, reduce as much ice or moisture as possible from the covers that may have condensed over night. This will ensure the covers roll up easily and don't grow fungi. We suggest holding the leading edge and then tapping the top with a flat hand and/or wiping with a cloth when very moist.

### Fitting "Hooking" clasp

The Hooking clasp is normally mounted immediately below the bumper rail for the best seal but also works well above the rail in many cases.

